

## Funding for Woodfuel Supply Businesses

If you want to start or grow a woodfuel supply company, you can get support and investment from CO2Sense.

You can get investment in:

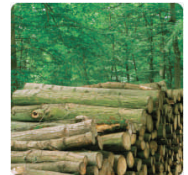
- **specialist processing equipment** such as chippers, specialist delivery vehicles and woodfuel stores to help your business to expand
- **feasibility studies**, to see how your business could expand, and to help you make the right investment decisions
- other projects **within the woodfuel supply chain** that will help develop a strong supply of quality woodfuel within the region.



You can get an investment package best suited to your project – and you won't have to make any payments back to us unless you are receiving income from your project.



You can apply for CO2Sense investment if your business operates within Yorkshire and Humber.



To start your application today, call 0113 237 8419 or email [jan.phillips@co2sense.org.uk](mailto:jan.phillips@co2sense.org.uk), or visit [www.co2sense.org.uk/funding](http://www.co2sense.org.uk/funding)

If you'd like to see examples of how we've worked with other companies, visit [www.co2sense.org.uk/how-weve-helped-other-companies](http://www.co2sense.org.uk/how-weve-helped-other-companies)

co<sub>2</sub>sense<sup>®</sup>

Victoria House  
2 Victoria Place  
Leeds, LS11 5AE  
0113 237 8400

[www.co2sense.org.uk](http://www.co2sense.org.uk)

CO2Sense Ltd. Registered in England No. 5383346

A specialist deliverer of

Solutions  
for Business

Financed by  
Government



Project Part - Financed  
by the European Union  
European Regional  
Development Fund